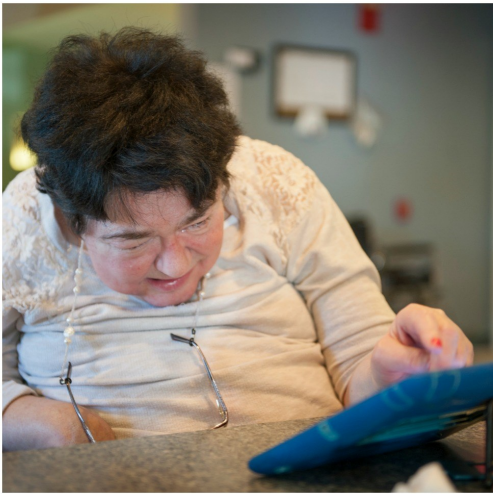


Developmental Health Services (Clinical Supports)



For people with intellectual and developmental disabilities



Services offered through this program are designed to enhance the independence, integration, and productivity of the people we support. Although the supported individual is the primary recipient of services, his/her family members may also take advantage of the offerings, in collaboration with the individual. Services are provided by trained, qualified staff in either an individual or group counseling format.

Social Work

Intake and assessment services identifying social or other factors affecting the identified individual. Counseling topics include, but are not limited; to family dynamics, substance abuse, sexuality issues, parenting, self-esteem, autonomy, understanding and exhibiting individual rights, assertiveness and protection from victimization. These issues can also be addressed in a group setting.

Psychology

Diagnostic testing (IQ), adaptive skills assessment, NYS OPWDD eligibility assessment, autism diagnostic, and specialized evaluations including guardianship and capacity to provide informed consent. Counseling is also available.

Psychiatry

Assessment and support services for individuals presenting behavioral, emotional or other mental health issues. Counseling topics could include, but are not limited to: medications management, eating disorders, depression, impulse control, and mood disorder.

Occupational Therapy

Evaluation provided by a licensed occupational therapist. The assessment is a functional evaluation of the individual and includes planning of a program of purposeful activities to develop or maintain adaptive skills to achieve maximum participation in daily life tasks. Recommendation for further clinical and habilitation supports are provided as a result of the evaluation. Individual counseling may be available on a limited basis.

Physical Therapy

Evaluation provided by a licensed physical therapist which identifies treatment needs resulting from an injury or disease. An assessment may also be requested to evaluate and identify support services relevant to enhancing or maximizing fine and gross motor skill activities. Recommendations for further clinical and habilitation supports are provided as a result of the evaluation. Individual counseling may be available on a limited basis.

Speech & Language

Evaluation provided by a licensed speech pathologist of development and disorders of speech, voice, swallowing and language. Recommendations for further clinical and habilitation supports are provided as a result of the evaluation. Individual counseling may be available on a limited basis.

Nutrition

Assessment service designed to offer recommendations to support individuals whose nutritional habits may need to be reviewed based upon identified medical conditions. Examples could include: diabetes management, hypertension, GERD, lactose intolerance, gluten intolerance and irritable bowel syndrome.

At-Home Behavioral Support Services

At-home behavioral support services are intended to assist families with managing challenging behaviors which may be exhibited by an individual with a developmental disability. The support is provided by an experienced behavioral specialist. The support is time limited. The behavioral specialist will complete an in-home assessment and work with the family to develop a behavioral support plan which can be implemented at home. Training and support are provided as needed.

START (Systematic, Therapeutic, Assessment, Resources, and Treatment)

The Western Finger Lakes START team covers all 17 counties of Region 1 with offices in Canandaigua, Batavia, and West Seneca. This program is available to individuals, and their support systems, who are at least 6 years of age, and who have a history of, or current, acute behavioral health needs (mental health and/or challenging behaviors) which the current system of support has difficulty managing. The goal of this program is to provide support and technical assistance to community MH crisis and intervention supports; create and maintain linkages, and relationships, with community partners; coordinate support meetings and cross-systems crisis plans for individuals; provide on-going consultation to providers and/or families; provide training and technical assistance to community partners; and provide short-term therapeutic crisis supports – both emergency and planned.

Clinical Services Locations, with appointments generally scheduled between the hours of 8 a.m. and 4:30 p.m.:

- Chemung County
 - The Arc Chemung-Schuyler, 711 Sullivan Street, Elmira, NY
 - Pathways, Inc., 800 West Broad Street, Horseheads, NY
- Schuyler County – The Arc Chemung-Schuyler, Watkins Glen, NY
- Steuben County
 - The Arc Allegany-Steuben, 6838 Industrial Park Road, Bath, NY
 - Pathways, Inc., 33 Denison Parkway, Corning, NY
 - 42-46 Seneca Street, Hornell, NY
- Allegany County – The Arc Allegany-Steuben, 240 O'Connor Street, Wellsville, NY

